

## Installing MSI™ Live Update 2™

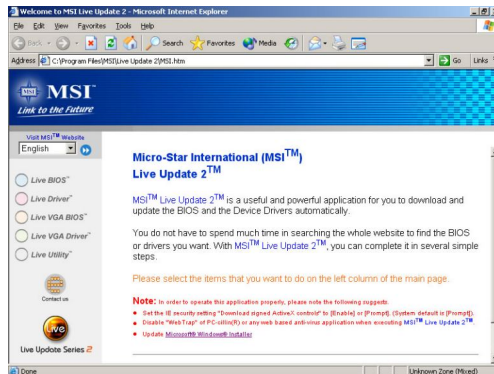
MSI™ Live Update 2™ is a useful utility for you to upgrade your MSI™ mainboard and VGA card. Thanks to the powerful capacity of this utility, you can conveniently download and automatically update the BIOS and the drivers on-line, without spending much time in searching many Web sites to find the BIOS or drivers you want.

### Installing from the CD-Title

1. Insert the CD into the CD-ROM drive, and start the **Setup** program.
2. Click the **Utility** tab on the setup screen.
3. Click the **MSI™ Live Update 2™**. Follow the on-screen instructions to complete the installation.

### Installing from the MSI™ Web Site

1. Make connection to MSI's website at <http://www.msi.com.tw>
2. Select **/Support/Live Update 2/** on the upper part of the MSI's homepage to enter the setup page.
3. Click the **InstallShield Wizard** button to have the program of MSI™ Live Update 2™ with MSI™ Live monitor downloaded and installed on your system automatically, or click **here (manual)** to download and install the program manually.
4. Follow the on-screen instructions to complete the installation.



The page of the MSI™ Live Update 2™

## Using MSI™ Live VGA Driver™ Update

### MSI™ Live VGA Driver™ Update

This service enables you to update the latest VGA driver for your VGA card.

1. To update the MSI™ Live VGA Driver™, click **Live VGA Driver™** item on the left column of the main page.
2. This utility will start checking your platform and the information on the VGA card, and display the information in a list.
3. Click the **graph** button on the bottom to connect MSI™ Live Update 2™

Server. It will automatically connect the Internet and compare the version of the driver in the database.

4. It may take several minutes to detect the required drivers. Please wait while proceeding detection.
5. Click the **InstallShield Wizard** button on the right side of the table to download and update the driver. All actions will proceed automatically.
6. Follow the on-screen instructions to complete the updating procedure.

## Using MSI™ Live VGA BIOS™ Update

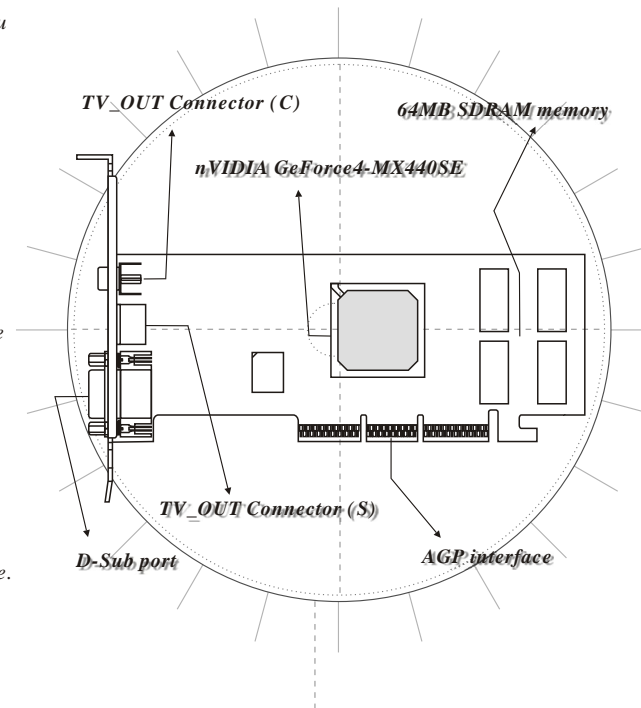
### MSI™ Live VGA BIOS™ Update

This service enables you to update the latest VGA BIOS for your VGA card.

1. To update your VGA BIOS, click **Live VGA BIOS™** item on the left column of the main page.
2. If your VGA card does not support the **Live VGA BIOS™** function, you will receive a warning message on the screen.
3. If your VGA card do support the **Live VGA BIOS™** function, please pay attention to the message shown on the screen telling you that in what circumstance flashing BIOS may fail to reboot.
4. Click **Yes** if you would like to try it at your own risk or **No** to return to the main page with everything unchanged.
5. If you click **Yes** to continue, it will check the information and BIOS version of your VGA card, and list them in a table.
6. Click the **graph** button at the bottom to connect the MSI™ Live Update 2™ Server.
7. The MSI™ Live VGA BIOS™ will automatically connect the Internet and search the supported BIOS in the database of MSI™.
8. If it has found one (or several) supported BIOS for your VGA card, click the **InstallShield Wizard** button on the right side of the table to have the new BIOS downloaded and updated automatically.
9. Follow the on-screen instructions to complete the updating procedure.

## MX440SES-T

nVIDIA® GeForce4™ MX440SE inside!!!



\* All trademarks used in this manual are the sole property of their respective owners.

VGA is a trademark of International Business Machines Corporation.  
Pentium® is a registered trademark of Intel Corporation.  
Windows® is a registered trademark of Microsoft Corporation.



TEL. 886-2-32345599  
FAX. 886-2-32345488  
<http://www.msi.com.tw>



MICRO-STAR  
INTERNATIONAL

PRN. 2002/11

G52-V2NG409

## Before Installing

Please check out the following items to make sure that you get the complete product:

- VGA card
- CDs
  - drivers and documentation on CD
  - Applications on CD

\* Consult your dealer immediately if anything is missing or damaged.

## System Requirements

To install the VGA card, your computer system needs to meet the following requirements:

- **Computer**  
Intel® Pentium® processor, Intel® Celeron™ or Pentium® II/III/4 processor or compatible system.
- **Slot**  
AGP slot.
- **Monitor**  
VGA Support, minimum 640x480 resolution.
- **Operating System**  
Windows® XP/2000/ME/98SE..
- **CD-ROM drive**  
Double Speed or Higher.

## Card Features

### Feature

- nView multi-display technology
  - Multiple configurations of CRTs
- nVIDIA® Lightspeed Memory Architecture (LMA) II technology
  - 128-bit DDR
  - Z-occlusion culling and FastZ-clear
- Accuview Antialiasing-high-resolution antialiasing
  - Accuview Antialiasing technology
  - Dedicated multisample Accuview hardware
- Integrated hardware transform and lighting engines
  - 256-bit graphics engine
  - 4 texture-mapped, filtered, lit texels per clock cycle
  - 32-bit color, Z/stencil buffering
  - Cube environment mapping
  - DirectX® and S3 texture compression
- Support for AGP 4X
- nVIDIA® Shading Rasterizer (NSR)
- High performance 256-bit 2D rendering engine
- nVIDIA® video processing engine (VPE)
  - Integrated TV encoder at 1024x768 resolution
  - Integrated full hardware MPEG-2 decoder
  - Hardware colorspace conversion (YUV 4:2:2 and 4:2:0)
- Operating Systems
  - Windows® XP/2000/ME/98SE
- API support
  - Complete DirectX®, DirectX® 8.1 and OpenGL® 1.3 support

### Performance

- 1.0 billion texels/sec. fillrate
- 31 million triangles/sec. fillrate
- 5.3 GB/sec. memory bandwidth

### Compatibility

- nVIDIA® Unified Driver Architecture (UDA)
- WHQL-certified for Windows® XP/2000/ME/98SE

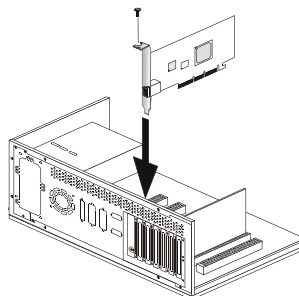
### Supports Super High Resolution Graphics Modes

- 640x480 8/16/32 bit colors with 150Hz
- 800x600 8/16/32 bit colors with 150Hz
- 1024x768 8/16/32 bit colors with 120Hz
- 1152x864 8/16/32 bit colors with 120Hz
- 1280x1024 8/16/32 bit colors with 100Hz
- 1600x1200 8/16/32 bit colors with 85Hz
- 1920x1200 8/16/32 bit colors with 75Hz
- 2048x1536 8/16/32 bit colors with 60Hz

## Hardware Installation

Follow the steps below to install the VGA card:

1. Remove the computer case.
2. Locate the AGP slot on your mainboard.  
Warning: Inserting the VGA card into a wrong slot (e.g. PCI slot) will damage your card (refer to your mainboard manual for more information).
3. Put the card directly over the AGP slot and press one end of the card into the slot first. Gently but firmly press the other end until it is fully seated in the slot.
4. Secure the card with a bracket screw.
5. Install all other cards and devices and connect all the cables, and then install the case.
6. Connect the monitor. Now, you are ready to install the software on your computer.



## Software Installation (for Windows® XP)

To install the driver of the VGA card to your computer running Windows® XP, please follow the steps below:

1. Turn on the computer.
2. Insert the CD into the CD-ROM drive. The Autorun program will start the Setup program, and show the setup screen as follows:



Tip: If, on your computer, the Autorun program does not execute automatically, please 1) enable the CD-ROM drive Auto-detect function from Control Panel; or 2) find and run the setup.exe file

3. Click nVIDIA VGA Drivers. Follow the on-screen instructions to complete the installation.
4. After finishing the installation, restart the computer as instructed.

## Software Installation (for Windows® 2000)

To install the driver of the VGA card to your computer running Windows® 2000, please follow the steps below:

1. Turn on the computer.
2. Insert the CD into the CD-ROM drive. The Autorun program will start the Setup program, and show the setup screen as follows:



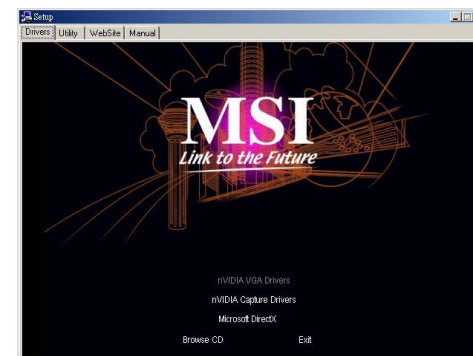
Tip: If, on your computer, the Autorun program does not execute automatically, please 1) enable the CD-ROM drive Auto-detect function from Control Panel; or 2) find and run the setup.exe file manually from the CD.

3. Click nVIDIA VGA Drivers. Follow the on-screen instructions to complete the installation.
4. After finishing the installation, restart the computer as instructed.

## Software Installation (for Windows® 98SE/ME)

To install the driver of the VGA card to your computer running Windows® 98SE/ME, please follow the steps below:

1. Turn on the computer.
2. Insert the CD into the CD-ROM drive. The Autorun program will start the Setup program, and show the setup screen as follows:



Tip: If, on your computer, the Autorun program does not execute automatically, please 1) enable the CD-ROM drive Auto-detect function from Control Panel; or 2) find and run the setup.exe file manually from the CD.

3. Click nVIDIA VGA Drivers. Follow the on-screen instructions to complete the installation.
4. After finishing the installation, restart the computer as instructed.